

# Rialto Unified School District

## Organizational Chart 2017-2018

### MEMBERS OF THE BOARD OF EDUCATION

**Dina Walker**  
*President*

**Joseph Martinez**  
*Vice President*

**Edgar Montes**  
*Clerk*

**Joseph Ayala**  
*Member*

**Nancy O'Kelley**  
*Member*

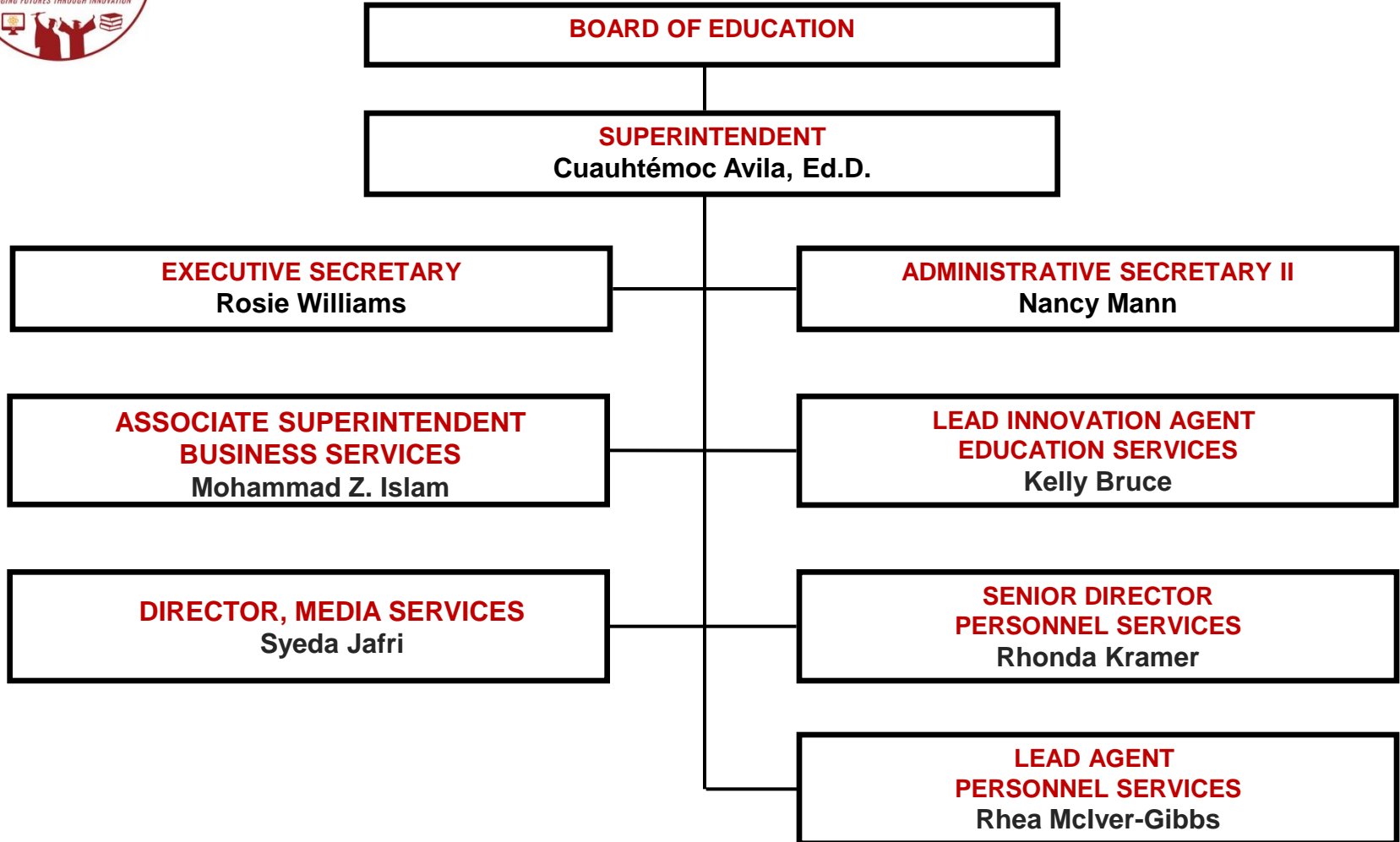
**Cuauhtémoc Avila, Ed.D.**  
**Superintendent**





# ORGANIZATIONAL CHART

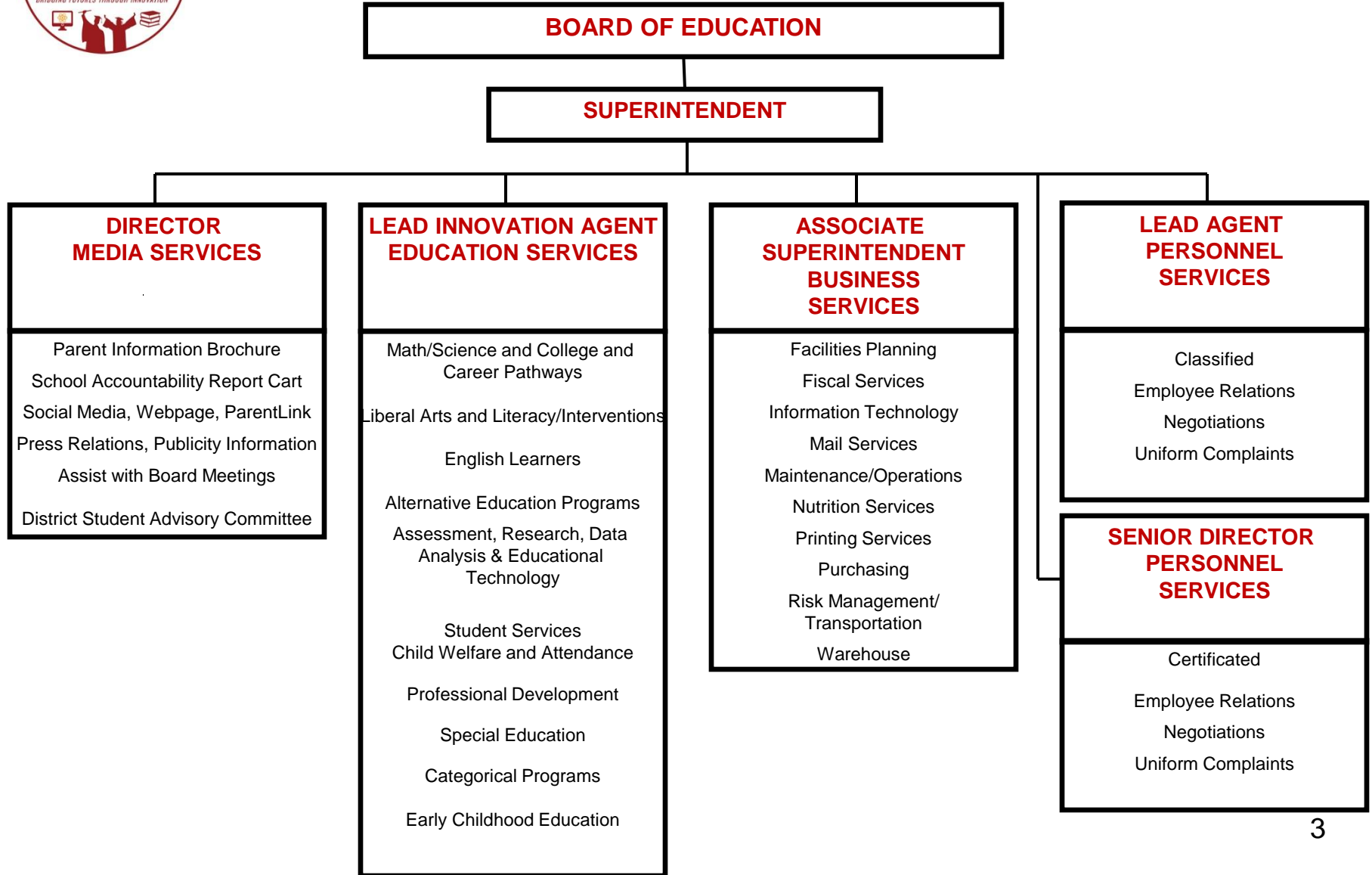
FY 2017 - 2018





# DISTRICT SUPERVISION AND EVALUATION

FY 2017 - 2018



# **EDUCATION SERVICES**

## **Lead Innovation Agent**



# EDUCATION SERVICES

FY 2017 - 2018

**SUPERINTENDENT**  
Cuauhtémoc Avila, Ed.D.

**LEAD INNOVATION AGENT**  
Kelly Bruce

**LEAD ACADEMIC AGENT:  
MATH/SCIENCE & COLLEGE/CAREER PATHWAYS**  
Edward D' Souza, Ph.D.

**LEAD ACADEMIC AGENT:  
LIBERAL ARTS & LITERACY/INTERVENTION**  
Jasmin Valenzuela

**DIRECTOR, ALT ED/ADULT ED/ROP/CTE**  
Veronica Smith-Iszard

**DIRECTOR, ENGLISH LEARNERS**  
Marina Madrid

**ACADEMIC AGENT:  
MATH/SCIENCE & COLLEGE/CAREER PATHWAYS**  
Eva Serrato

**ACADEMIC AGENT:  
LIBERAL ARTS & LITERACY/INTERVENTION**  
Beth Curtiss

**DIRECTOR, EARLY EDUCATION**  
Patricia Krizek, Ed.D.

**DIRECTOR:  
STRATEGIC INIATIVES & SPECIAL PROGRAMS**  
Vacant

**LEAD SPECIAL SERVICES AGENT:  
SPECIAL EDUCATION**  
Bridgette Ealy

**SENIOR DIRECTOR, STUDENT SERVICES**  
Angela Brantley

**AGENT, INDUCTION/TEACHER SUPPORT**  
Teresa Brown

**LEAD ACADEMIC TECHNOLOGY AGENT**  
John Roach



# SCHOOL SITE SUPERVISION & EVALUATION

FY 2017 - 18

## ELEMENTARY SCHOOL SITES

**Beth Curtiss**  
**Academic Agent**

- ❖ Bemis
- ❖ Kelley
- ❖ Boyd
- ❖ Morgan
- ❖ Curtis
- ❖ Morris
- ❖ Henry

**Rhea McIver Gibbs**  
**Lead Personnel Agent**

- ❖ Casey
- ❖ Fitzgerald
- ❖ Dollahan
- ❖ Kordyak
- ❖ Dunn
- ❖ Werner

**Eva Serrato**  
**Academic Agent**

- ❖ Garcia
- ❖ Preston
- ❖ Hughbanks
- ❖ Simpson
- ❖ Myers
- ❖ Trapp

## SECONDARY SCHOOL SITES

**John Roach**  
**Lead Academic Tech. Agent**

- ❖ Frisbie
- ❖ Kucera
- ❖ Jehue
- ❖ Rialto MS
- ❖ Kolb

**Kelly Bruce**  
**Lead Innovation Agent**

- ❖ Carter
- ❖ Milor
- ❖ Eisenhower
- ❖ Zupanic
- ❖ Rialto HS

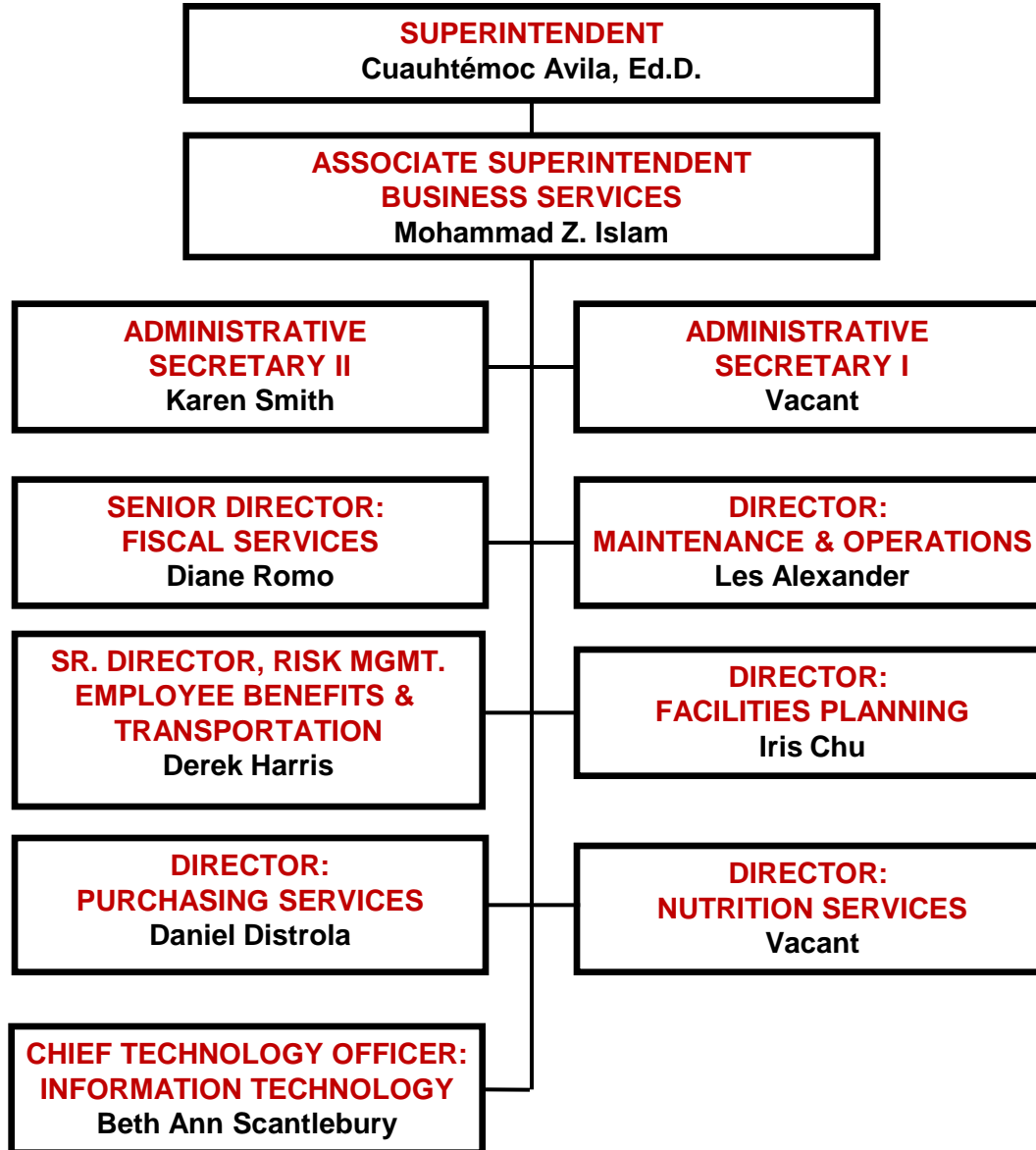
# **BUSINESS SERVICES**

**Associate  
Superintendent**



# BUSINESS SERVICES

FY 2017 - 2018





# PERSONNEL SERVICES



# PERSONNEL SERVICES

FY 2017 - 2018

