



Strategics

2019



BRIDGING
futures
THROUGH
INNOVATION



BOARD OF EDUCATION

The Rialto Unified School District Board of Education consists of five elected school Board officials and one student representative. The Board of Education adopts policies and sets goals and expectations that guide district governance.



Mr. Edgar Montes
President



Mrs. Nancy G. O’Kelley
Vice President



Ms. Dina Walker
Clerk



Mr. Joseph Ayala
Member



Mr. Joseph Martinez
Member



Avionc’ Douglas
Student Board Member

PAGE OF CONTENTS

04 • Superintendent’s Message

06 • Strategy 1
Diverse Avenues for Learning

07 • Strategy 2
Rigorous Instruction

08 • Strategy 3
High Expectations

09 • Strategy 4
School & Community

10 • Strategy 5
Full Engagement of Families

11 • Strategy 6
Exemplary Staff

12 • Strategy 7
Ensuring Resources

13 • Strategy 8
Streamlined Organization

14 • Bridge Builder

The Original Strategic Planning Team

- | | | |
|--------------------------|-------------------|-------------------|
| Dr. Cuauhtémoc Avila | Gary Kelly | Lidia Smith |
| Arnie Ayala | Gordon Leary | Serena Straka |
| Alberto Bojorquez | Luz Levine | Max Tidler |
| Ed Carillo | Lisa Lindberg | Pauline Tidler |
| Ted Caruthers | Destiny Lopez | Raquel Torres |
| Rafael Chavarria | Rhea McIver Gibbs | Armando Urteaga |
| Pat Crump | Robin McMillon | Jasmin Valenzuela |
| Beth Curtiss | Kem Morris | Dina Walker |
| Dr. Edward D’Souza | Rick Nelson | Kimberly Woods |
| Dr. Arnett “Carl” Duncan | Cristina Ocegueda | |
| Al Flores | Connie Richardson | |
| Shelly Gastelo | John Roach | |
| Gloria Macias-Harrison | Eva Serrato | |
| Earlene Hyman | Diana Silva | |
| Syeda Jafri | Linda Silva | |

SUPERINTENDENT'S MESSAGE

Dr. Cuauhtémoc Avila



The Mission of the RUSD includes: ensuring that every student achieves personal and career fulfillment. This requires that everyone involved in a child's education holds him or herself to high expectations, beginning with kindness.

RIALTO KINDNESS

Kindness, in its fullest expression, exists when its two elements; empathy and personal honor, become one. Empathy is having the capacity to understand or feel what another person is experiencing. Empathy is exemplified by being good, helpful, and considerate towards others. Essentially, it means being a nice and caring person. Personal honor is to have self-discipline and respect for one's conduct. It is exemplified by being punctual and having presence and commendable work ethic. For educators, honor is exercising one's full powers to create conditions that generate new opportunities- it means being at work and on time every day, while having agency to create policies, formations, or lessons that will have a tremendous and lasting impact on others, *especially our students.*





BELIEFS

We believe that...

- Everyone has unique talent
- There is boundless power in all of us
- All people have equal inherent worth
- Diversity is strength
- Each person deserves respect
- High expectation inspires high achievement
- Risk is essential to success
- Common and individual interest are reciprocal
- Integrity is critical to trust
- Honest conversation leads to understanding
- Music is the universal language
- A strong community benefits all of its members
- Everyone can contribute to the good of the community

BRIDGING
futures
THROUGH
INNOVATION



MISSION

The mission of the Rialto Unified School District, the bridge that connects students to their aspirations for the future, is to ensure each student achieves personal and career fulfillment within a global society, through a vital system distinguished by:

- High expectation for student achievement
- Safe and engaging learning environments
- Effective family and community involvement
- Learning opportunities beyond the traditional school setting
- Appreciation of universal diversity

BRIDGING
futures
THROUGH
INNOVATION



PARAMETERS

- We will make all decisions in the best interest of students
- We will honor the worth and dignity of each person
- We will hold the highest expectations of everyone
- We will assert the unlimited potential of every student
- We will practice participatory decision-making throughout the district
- We will not allow the past to determine our future

BRIDGING
futures
THROUGH
INNOVATION

BRIDGING
futures
THROUGH
INNOVATION

Strategy 1

WE WILL PROVIDE DIVERSE AVENUES FOR LEARNING BOTH INSIDE AND OUTSIDE THE CLASSROOM

OVERVIEW

- Plan 1
Technology infused learning environments
- Plan 2
Exemplary program of distinction schools
- Plan 3
After school fine arts program
- Plan 4
Career exploration opportunities
- Plan 5
After school enrichment program
- Plan 6
After school mentoring program



ARCHWAYS

Strategy 2

WE WILL PROVIDE RIGOROUS AND RELEVANT INSTRUCTION THAT SUPPORTS EACH STUDENT'S UNIQUE LEARNING STYLE

OVERVIEW

Plan 1
Rigorous and relevant instruction

Plan 2
Opportunities to engage learning driven by personal interest

Plan 3
Fostering creativity and risk taking in the schools

Plan 4
Build and nurture grit

Plan 5
21st Century skills to maximize student achievement

Plan 6
Learning experiences designed for students' unique learning styles



Strategy 3

WE WILL CREATE A CULTURE OF HIGH EXPECTATIONS WITHIN RIALTO UNIFIED SCHOOL DISTRICT AND OUR COMMUNITY

OVERVIEW

Plan 1
All staff meet big expectations

Plan 2
Staff, students, parents, and the community demonstrate understanding of the District’s high expectations

Plan 3
A culture of high expectations prepares all students to compete with their peers globally

Plan 4
The District possesses high degrees of parent participation

Plan 5
Students gain hands-on experiences in professional/business environments

Plan 6
All students benefit from research-based programs that improve their academic, social, and emotional well-being



ARCHWAYS

Strategy 4

WE WILL BRIDGE SCHOOL AND COMMUNITY
LEARNING OPPORTUNITIES

OVERVIEW

Plan 1

A system of communication to facilitate the carrying out of collaborative plans

Plan 2

Community has common language and mindset

Plan 3

Students have a strong sense of civic responsibility and engagement

Plan 4

Students who are ready to engage as global citizens by being culturally aware

Plan 5

Economic literacy of students

Plan 6

Socially and emotionally healthy students

Plan 7

Students reelect communication, critical thinking and collaborative skills

Plan 8

A community that encourages creativity

Plan 9

Students have strong math skills

Plan 10

A scientifically literate community

Plan 11

A community focused on literacy



Strategy 5

WE WILL ENSURE FULL ENGAGEMENT
OF RIALTO UNIFIED FAMILIES

OVERVIEW

Plan 1

Over site of programs and activities

Plan 2

Workshops and programs based
on self-reporting needs of school
district families

Plan 3

Community outreach resources
and programs

Plan 4

Interactive events and activities
that include students

Plan 5

Welcoming and friendly school
environments



ARCHWAYS

Strategy 6

WE WILL ENSURE WE HAVE EXEMPLARY STAFF WHO MEET THE UNIQUE NEEDS AND ASPIRATIONS OF OUR DIVERSE STUDENTS

OVERVIEW



Plan 1
Staff are high quality, above and beyond experts in their field

Plan 2
Knowledgeable, skilled, engaged, and diverse administrators, teachers, and staff

Plan 3
Rialto Unified School District's reputation exemplifies the high standards

Strategy 7

WE WILL ENSURE RESOURCES AND ASSETS ARE ALLOCATED AND DEVELOPED TO DIRECTLY SUPPORT STUDENT LEARNING EXPERIENCES

OVERVIEW

Plan 1

Academic support to elementary or middle school in reading and/or math

Plan 2

Timely access to instructional materials and student learning materials in the classroom

Plan 3

Flexibility and responsibility in campus funding

Plan 4

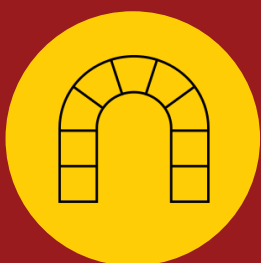
Social emotional resources for students and families

Plan 5

Student centered decision making in fiscal matters

Plan 6

Simplicity in communicating with those charged with resources



ARCHWAYS

Strategy 8

WE WILL STREAMLINE AND SIMPLIFY THE DYNAMICS OF OUR ORGANIZATION

OVERVIEW

Plan 1

A 3-dimensional organizational design that is student centered

Plan 2

Supportive and confidential “mentoring clusters”

Plan 3

New, creative, and innovative ideas and initiatives encouraged and supported

Plan 4

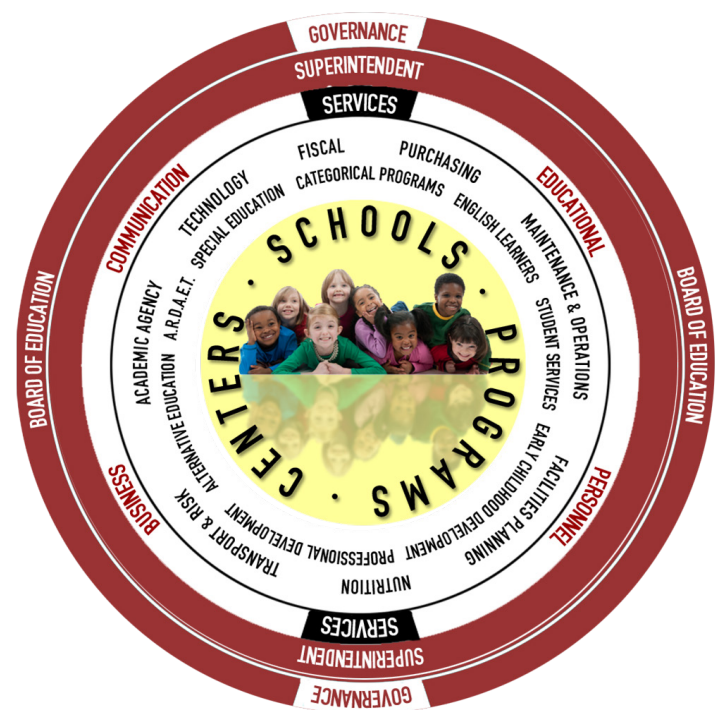
Effective communication throughout the community

Plan 5

Current “Role Descriptions” for all staff

Plan 6

Technology protocols to meet the needs of our 21st Century Innovation Bridge Design



Overview & Purpose

INTRODUCTION

The Innovation Bridge is designed to transform our school district and community to continually create the future we want to see for our students.



There are eight strategies represented within the Innovation Bridge Design that create the tools and conditions necessary so that every student reaches their fullest potential. Our focus is for every student to be fully engaged and inspired in their learning so they will be fully prepared to continue their journey of college and a chosen career.

The Innovation Bridge is a visual representation of how Rialto Unified's beliefs, parameters, mission and strategies inspire learning and support. The focus of the IBD is to truly sustain a bridge or pathway that provides educational access and opportunity for all of our students' future to be successful.

Rialto's Innovation Bridge Design

“Bridging Futures
through Innovation”
Strategic Plan
identifies eight
strategies that create
and support our
Innovation Bridge
Design.

The Innovation
Bridge is
constructed to
supply the tools
and conditions
necessary for
learning that
allow for all Rialto
students to cross
over into their
future.



The Key Elements of a Strong Bridge and

Bridge Builders



Foundation

Foundation: Endpoints of the bridge. They are reinforced so that they can endure intense lateral pressures



Railings

Railings: The boundaries that are established, providing safe passage from one side of the bridge to the other

Missi

Parameters

Beliefs

how they connect to the Strategic Plan



Keystone

Keystone: The uppermost wedge-shaped voussoir at the crown of an arch which locks the other voussoirs into place



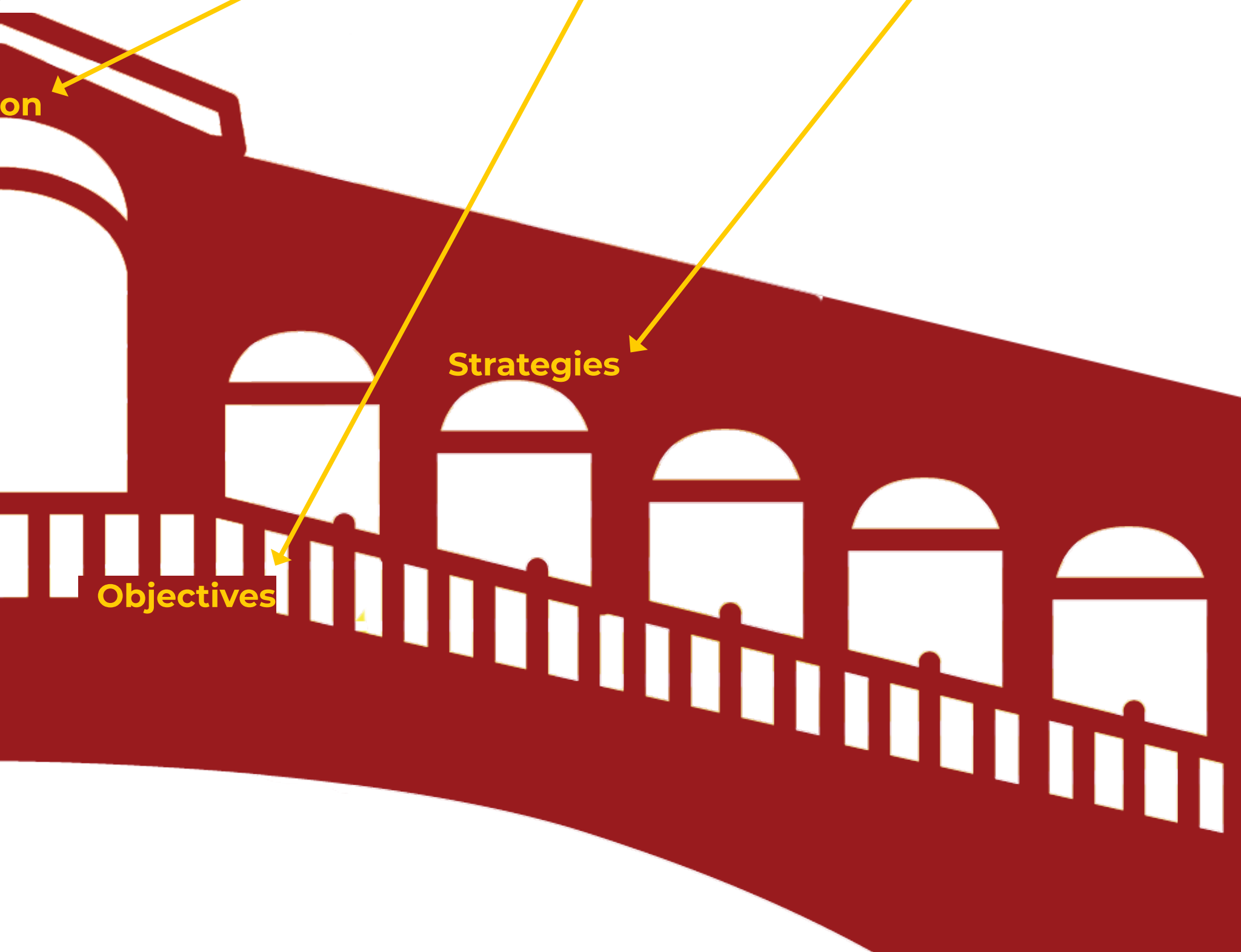
Deck

Deck: The top surface of a bridge which carries the traffic



Archways

Archways: A passage or doorway covered by an arch serving as support



School Contacts

Quick Reference

Elementary Schools

Bemis Elementary School	(909) 820-7916
Boyd Elementary School	(909) 820-7929
Casey Elementary School	(909) 820-7904
Curtis Elementary School	(909) 421-7366
Dollahan Elementary School	(909) 820-7943
Dunn Elementary School	(909) 820-7873
Fitzgerald Elementary School	(909) 421-7625
Garcia Elementary School	(909) 421-7620
Henry Elementary School	(909) 820-7910
Hughbanks Elementary School	(909) 820-7961
Kelley Elementary School	(909) 820-7924
Kordyak Elementary School	(909) 421-4203
Morgan Elementary School	(909) 820-7884
Morris Elementary School	(909) 820-6864
Myers Elementary School	(909) 820-7921
Preston Elementary School	(909) 820-7933
Simpson Elementary School	(909) 820-7954
Trapp Elementary School	(909) 820-7911
Werner Elementary School	(909) 820-6830

Middle Schools

Frisbie Middle School	(909) 820-7887
Jehue Middle School	(909) 421-7377
Kolb Middle School	(909) 820-7849
Kucera Middle School	(909) 421-7662
Rialto Middle School	(909) 879-7308

High Schools

Carter High School	(909) 854-4100
Eisenhower High School	(909) 820-7777
Rialto High School	(909) 421-7500
Milor High School (Cont.)	(909) 820-8110
Zupanic High School (Alt. Ed.)	(909) 820-8120

CONTACT US



182 E. Walnut Avenue
Rialto, CA 92376



(909) 820-7700



info@rialto.k12.ca.us

www.rialto.k12.ca.us



Strategic Plan

